

# Voltsmile

2023



CATALOG



# PRODUCT LINE-UP



# About us

Voltsmiles is a manufacturer specialising in researching, developing, and producing lithium battery storage systems. With the company headquarters located in Shenzhen, and several manufacturing facilities in Huizhou, Jiangxi, Dongguan and market centres in Amsterdam and Dusseldorf. We aim to provide the most satisfactory services with sales and support networks over all continents.

Founded in 1996, Shenzhen Londian Wason Holdings Group Co., Ltd is the parent company of Voltsmile, a state-level high-tech enterprise specialising in smart utility meters, intelligent equipment and energy storage. Londian Wason is also one of the biggest copper foil manufacturers in the world and partners with companies like LG, SK, Panasonic, Tesla and more.

As of 2023, the company's total assets exceed 15.4 billion, with over 3,500 employees and nine subsidiaries. Our central R&D and production bases are distributed in Henan Lingbao, Shandong Dongying, Shaanxi Baoji, Jiangsu Nanjing, Guangxi Nanning, Netherlands and other overseas bases under planning.

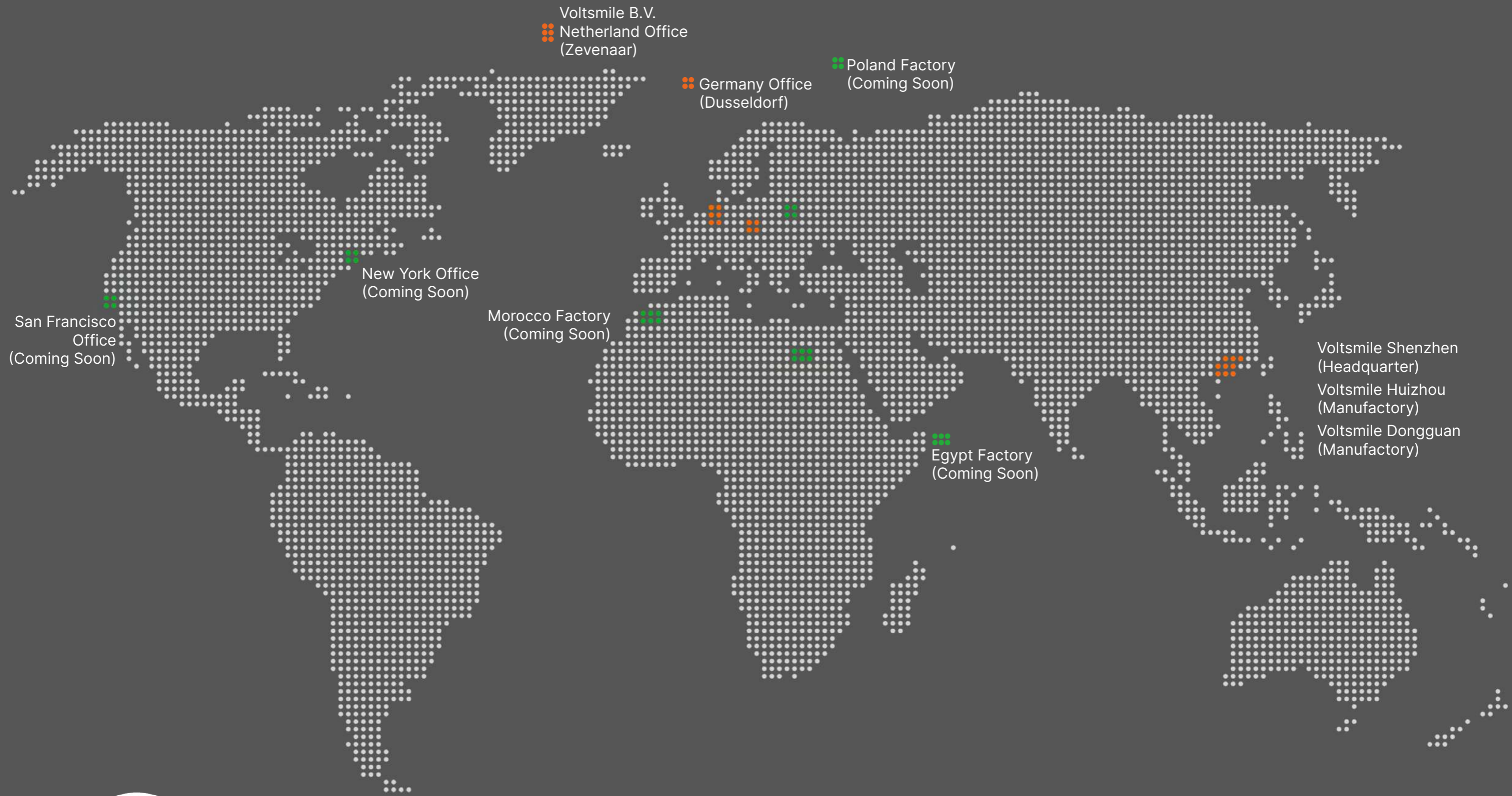
Its subsidiary Lingbao Gold Group Co., Ltd, is China's only listed private gold mining enterprise. In addition, it has five copper foil production subsidiaries and three research institutions. It made the company the top export company in China, with more than 120,000 tons of output and an annual sales revenue of more than 8 billion. Regarding power energy storage, Shenzhen Londian Wason Holdings Group Co., Ltd is also an A-level supplier of smart utility meters in China, accounting for 80% of the Nordic meter market.

Products are exported to Spain, France, the Netherlands, Germany, Poland, Ukraine, Turkey, South Africa, Mexico, Australia, and other continents. The company has permanently attached great importance to quality assurance and has obtained several certificates, including CNAS, CE, MSDS, IEC and UN38.3.

Londian Watson is also a state-level high-tech enterprise integrating new energy products, electronic new material R&D and manufacturing, and smart energy solutions. Thus, we can provide you with the most reliable product source and competitive price by working with all the major battery cell brands worldwide since most are our customers.

All our products comply with international quality standards and have different designs to make our products better-looking, stronger, and safer.





Voltsmile B.V.  
Netherland Office  
(Zevenaar)

Germany Office  
(Dusseldorf)

Poland Factory  
(Coming Soon)

New York Office  
(Coming Soon)

San Francisco  
Office  
(Coming Soon)

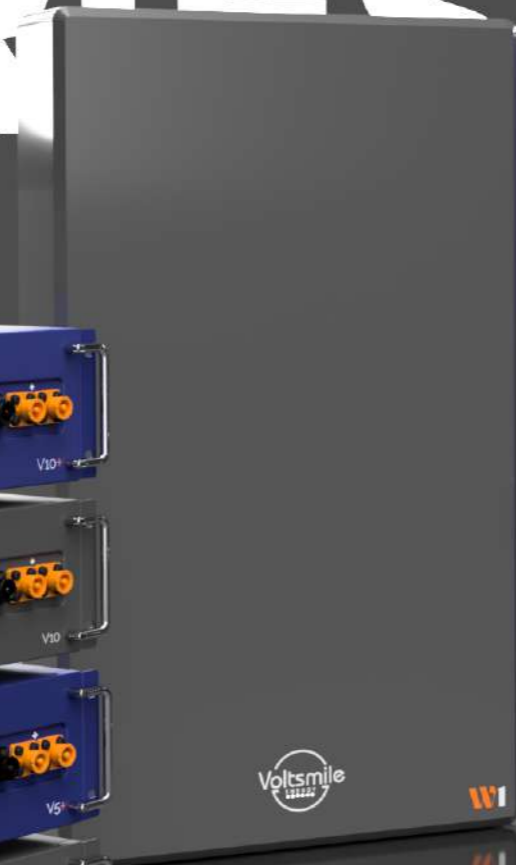
Morocco Factory  
(Coming Soon)

Egypt Factory  
(Coming Soon)

Voltsmile Shenzhen  
(Headquarter)  
Voltsmile Huizhou  
(Manufactory)  
Voltsmile Dongguan  
(Manufactory)



# LOW VOLTAGE SERIES





# SERIES

## SIGNATURE FORMULA

The V series batteries are robust and reliable low-voltage energy storage solutions for residential and commercial use. These batteries are designed with advanced lithium-ion phosphate technology, which provides a high energy density and long cycle life, making it an excellent choice for those looking to reduce their energy costs and environmental impact.

The V series batteries are compact and modular, allowing easy installation and scalability. They are equipped with a built-in Battery Management System (BMS) that ensures safe and efficient operation. They can be connected to various inverters for a complete energy storage system.

With a capacity ranging from 2.4kWh to 5.12kWh, the V series batteries can provide ample backup power during outages or periods of high energy demand. It is also compatible with various applications, including residential solar systems, commercial and industrial energy storage, and off-grid power systems.

Overall, the V series battery is a high-quality and versatile energy storage solution that can help users save money, reduce their carbon footprint, and enjoy reliable and efficient power.

**6K<sup>+</sup> OPTION**

** COLD CLIMATE** ** EXPANDABLE**



## V5&V5+

## V10&V10+

Voltage:	48V	51.2V
Capacity:	2,400Wh	5,120Wh
Charge Current:	50Amp	100Amp
Discharge Current:	50Amp	100Amp
Communications:	CAN / RS485	
String Quantity:	16 pcs	
Dimensions(mm):	442 × 410 × 133	442 × 470 × 133
Weight:	26 kg	42 kg
Working Temp:	-20°C~50°C*	-20°C~50°C*
Store Temp:	-20°C~55°C	-20°C~55°C
IP Rating:	IP20	
Humidity:	5%~95%(RH) No Condensation	
Altitude:	< 4500 M	
Design Life:	10+ Years	
Warranty:	10 Years	
Certifications:	IEC62619 / UN38.3 / CE / UKCA	

\*Only PLUS(+) models are rated for -20°C charging and discharging. For more informations please refer to COLD CLIMATE page.



# V Series Accessories

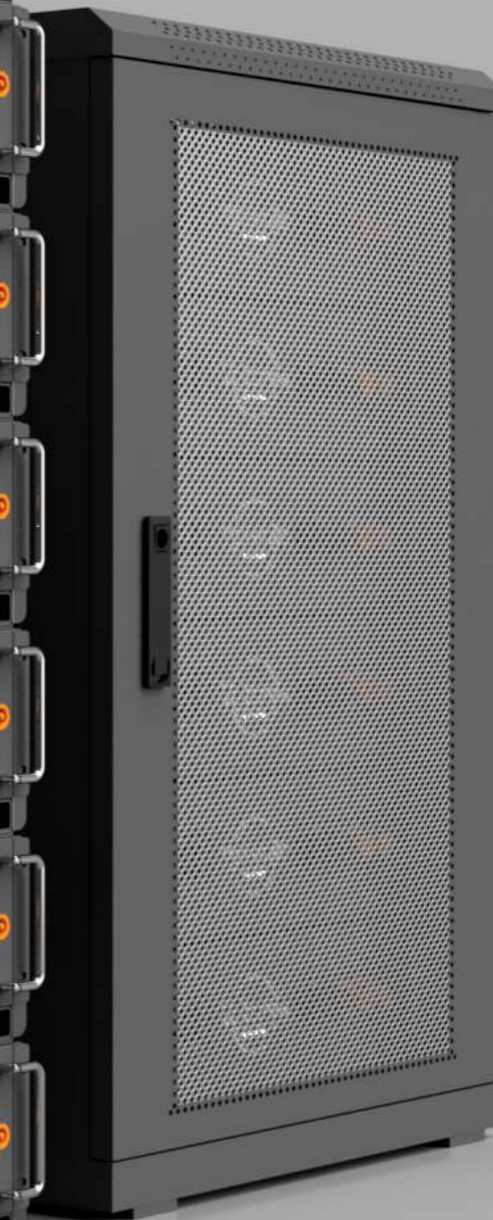
 **OPTION**



Wall Mounting Cabinet



Stackable Mounting Bracket



19' Battery Rack





**RPC**

## RAPID CONNECTION SYSTEM

Traditionally, installing a home energy battery system was a complicated and time-consuming process that required significant expertise and investment. However, Voltsmile's new RPC system has enabled installing a fast and easy-to-use home energy battery system that can run in just a few minutes.

With this new design, we'll explore the benefits of a quick installation of a home energy battery system, the components required for installation, and the steps involved in setting up a fast and efficient system that can help you save money and reduce your carbon footprint. Whether you're a professional installer or a seasoned DIY enthusiast, you can install a home energy battery system quickly and easily.

Installation is as easy as plug and plays with in-built Busbars and an integrated wiring system. No additional wiring is needed, which saves you time and money furthermore.

**6K<sup>+</sup> OPTION**  **COLD CLIMATE**

 **EXPANDABLE**

**Voltsmile**  
ENERGY

**RAPID CONNECT BUS**

# RPC V10



Voltage:	51.2V
Capacity:	5,120Wh
Charge Current:	100Amp
Discharge Current:	100Amp
Communications:	CAN / RS485
String Quantity:	16 pcs
Dimensions(mm):	442 × 490 × 133
Weight:	42 kg
Working Temp:	-20°C~50°C*
Store Temp:	-30°C~55°C
IP Rating:	IP20
Humidity:	5%~95%(RH) No Condensation
Altitude:	< 4500 M
Design Life:	10+ Years
Warranty:	10 Years
Certifications:	IEC62619 / UN38.3 / CE / UKCA

\*Only PLUS(+) models are rated for -20°C charging and discharging. For more informations please refer to COLD CLIMATE page.

# W SERIES



## New Standard Starts Here

Introduction the new wall-mounting home energy storage battery systems with IP67 IP ratings. The W series battery system carries 10Kwh of renewable energy, and homeowners have a new, more convenient option for storing their energy. These systems are designed to be mounted on walls, making them compact and space-efficient. They also come with IP67 IP ratings, which means they are dust-tight and can withstand heavy rain pour when mounted outdoors. With the W series, we will explore the benefits of wall-mounting battery systems with IP67 IP ratings and how they can help homeowners take their energy efficiency to the next level.

**6K<sup>+</sup> OPTION**

**COLD CLIMATE IP67**

**EXPANDABLE**



**W1**



## W1 & W1+

Voltage:	51.2V
Capacity:	10,240Wh
Charge Current:	100Amp
Discharge Current:	100Amp
Communications:	CAN / RS485
String Quantity:	16 pcs
Dimensions(mm):	888 × 518 × 150
Weight:	90 kg
Working Temp:	-20°C~50°C*
Store Temp:	-30°C~55°C
IP Rating:	<b>IP67</b>
Humidity:	5%~95%(RH) No Condensation
Altitude:	< 3500 M
Design Life:	10+ Years
Warranty:	10 Years
Certifications:	IEC62619 / UN38.3 / CE / UKCA

\*Only PLUS(+) models are rated for -20°C charging and discharging. For more informations please refer to COLD CLIMATE page.



**i** Single Phase  
Inverter

# COMING SOON

The Perfect pair for the W series

**5kWh**

**6kWh**

**8kWh**

 **OPTION**

 **COLD  
CLIMATE**

**IP65**

	BRANDS	MODEL	PORTS	
A	AISWEI	ASW3000/3680 /4000/5000H-S	CAN	
	ALPHA & OUTBACK	SPC III 5000-48	N/A	
	AXIOMA	ISPWM 5000 ISMPT BF 3000 - 5000 ISGRID (BF) 3000 - 5000	N/A N/A N/A	
D	DEYE	SUN-SG01LP1 SERIES SUN-SG03LP1 SERIES	CAN CAN	
	DELIOS S.R.L	DLS/C SERIES DLC AC SERIES	CAN CAN	
E	EFFEKTA	AX-M1 4000/5000-48 AX-K1 4000/5000-48	RS485 RS485	
		FSP POWER SOLUTION	POWERMANAGER SERIES 4-15KW OFFGRID PMI III/ZERO	RS485
G	GMDE	SOLDATE 3700TL+BM024	RS485	
	GOODWE	GW-BP SBP GW-ES EM	CAN CAN CAN	
G	GROWATT	SPH3000 - 6000 SPF2000 - 5000 LVM-48P M2000H/3000H/5000H - 48	CAN RS485 RS485	
		IMEON ENERGY	IMEON 3.6 IMEON 9.12	CAN CAN
		INGETEA M	ISS 1PLAY TL M SERIES	CAN
	INVT	BD SERIES	CAN	
K	KEHUA	SPH5000-BL	CAN	
L	LUXPOWER	LXP HYBRID ACS SERIES	CAN CAN	

# COMPATIBILITY



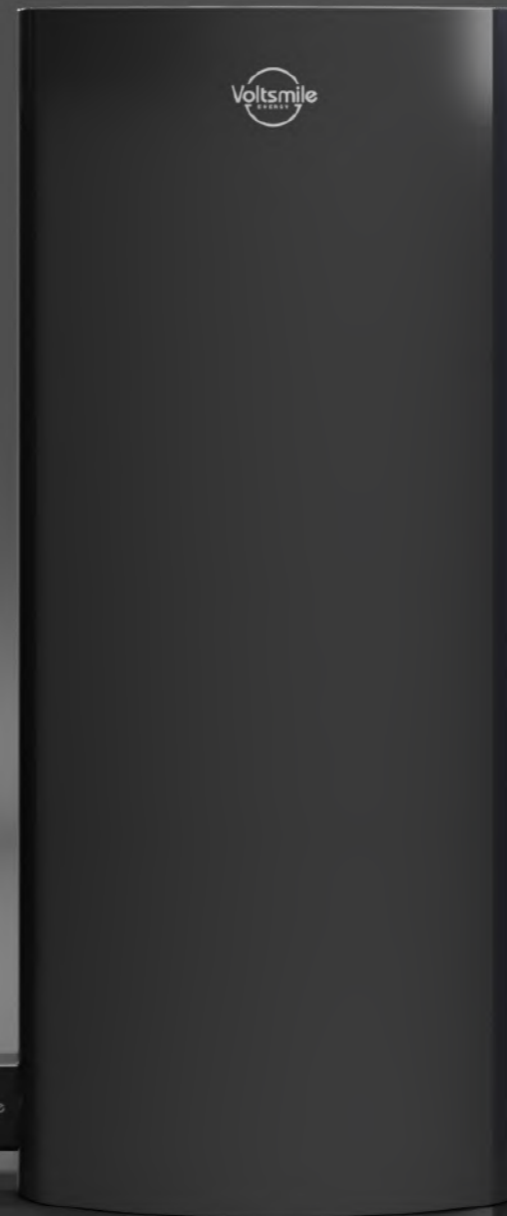
	BRANDS	MODEL	PORTS
M	MEGAREVO	RKL1 SERIES	CAN
		OASIS 448	N/A
	MLT	OASIS 648	N/A
MOIXA		SMART BATTERY V4 3000	CAN
		GRIDSHARE HUB	CAN
MORNINGSTAR		TRISTAR MPPT IN 48V	N/A
		TRISTAR MPPT 600V IN 48V	N/A
		TRISTAR PWM TS-45 IN 48V	N/A
OPTI-SOLAR		SP5000 BRILLIANT SERIES	RS485
		SP5000 REGAL/HANDY PLUS	RS485
		SP4000/10000 PREMIUM	RS485
PHOCOS	ANY-GRID PSW-H-5KW-230/48V	RS485	
REDBACK	SH5000	RS485	
SAJ		SUNFREE SERIES	RS485
		H1 SERIES	CAN
SCHNEIDER	CONEXT XW PRO SERIES	CAN	
SELECTRONIC		SPMC 480	CAN
		SPMC 481	CAN
		SPMC 482	CAN
SERMATEC	SMT-5K-TL-LV	CAN	
SOFAR		ME3000SP	RS485/CAN
		HYD SERIES	RS485/CAN
SOLARMAX		ES SERIES	CAN
		AC SERIES	CAN
SOLAX		SK-SU	RS232/CAN
		SK-TL	RS232/CAN
		SK-BMU	RS232/CAN
SOLIS		RHI SERIES	CAN
		RAI SERIES	CAN

	BRANDS	MODEL	PORTS
S	STECA	SOLARIX PLI 5000-48	N/A
		XTENDER 48V SERIE	CAN
		VARIOSTRING SERIE	CAN
STUDER	VARIOTRACK 48V SERIE	CAN	
SUNGROW	SH5K	CAN	
TBB	KINERGIER PRO SERIES:CK-II 2.0S-3.0S		CAN
		KINERGIER PRO SERIES:CK4.0S-8.0S	CAN
VICTRON		MULTIPLUS 48V	CAN
		QUATTRO 48V	CAN
VOLTRONIC		INFINISOLAR SERIES 48V	RS485
		AXPERT SERIES 48V	RS485
WESTERN	LEONARDO PRO 3000/48 Li	CAN	
ZUCCHETTI		AZZURRO 3000SP	RS485/CAN
		AZZURRO	RS485/CAN
CENTRO SISTEMI	HYD3000/6000-ES		

MORE,  
COMING  
SOON



# High Voltage Series







# H SERIES

## High Voltage, Higher Versatility

Home energy storage systems provide an effective solution, allowing homeowners to store excess energy and use it later when needed, the H series is taking a step further. Introducing our high-voltage home energy storage systems with stackable and expandable designs and IP65 IP ratings gives homeowners an even more versatile and reliable option for energy storage. H series systems are designed to be stackable and expandable, allowing homeowners to quickly increase their energy storage capacity as their needs change over time. And with IP65 IP ratings, these systems are resistant to dust and water, making them suitable for use in various environments. The H series will explore the benefits of high-voltage home energy storage systems with stackable and expandable designs and how they can help homeowners achieve greater energy independence and sustainability in any weather, indoors or outdoors.

**6K<sup>+</sup>**   **OPTION**   **COLD CLIMATE**  
**IP65**   **EXPANDABLE**

# H SERIES

Weather Resistant  
**IP65**

Stackable

**Up to 12 Modules**

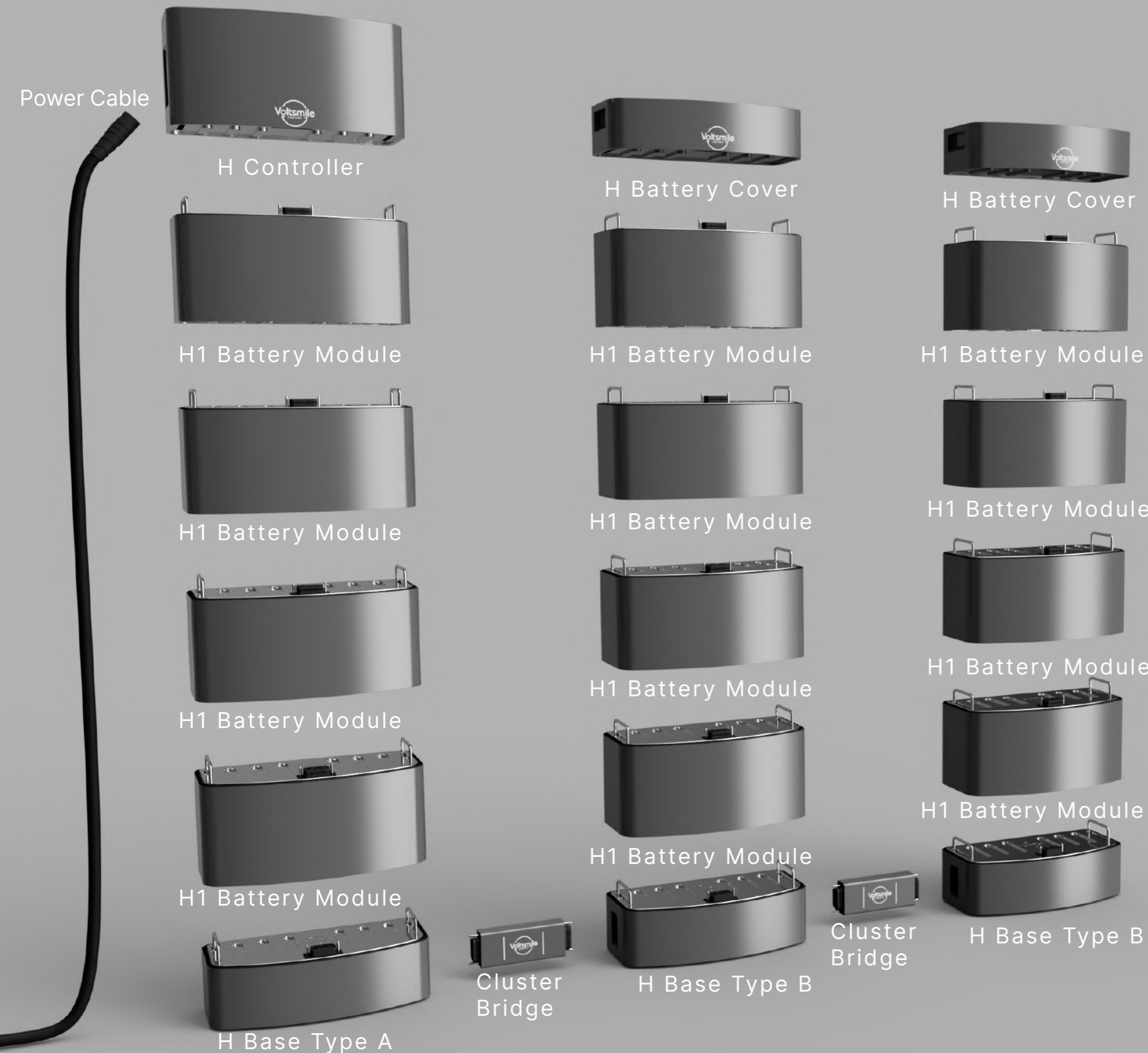
Expandable

**From 10.2kWh - 61.5kWh**

High-Voltage

**From 80V - 615V**

Energy Storage System






# H Battery Controller

 **Wireless Connection**

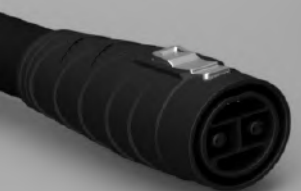
 **Mobile Apps**

 **Computer Apps**

Charge Indicator



Power Cable & Data Cable



On/Off Switch

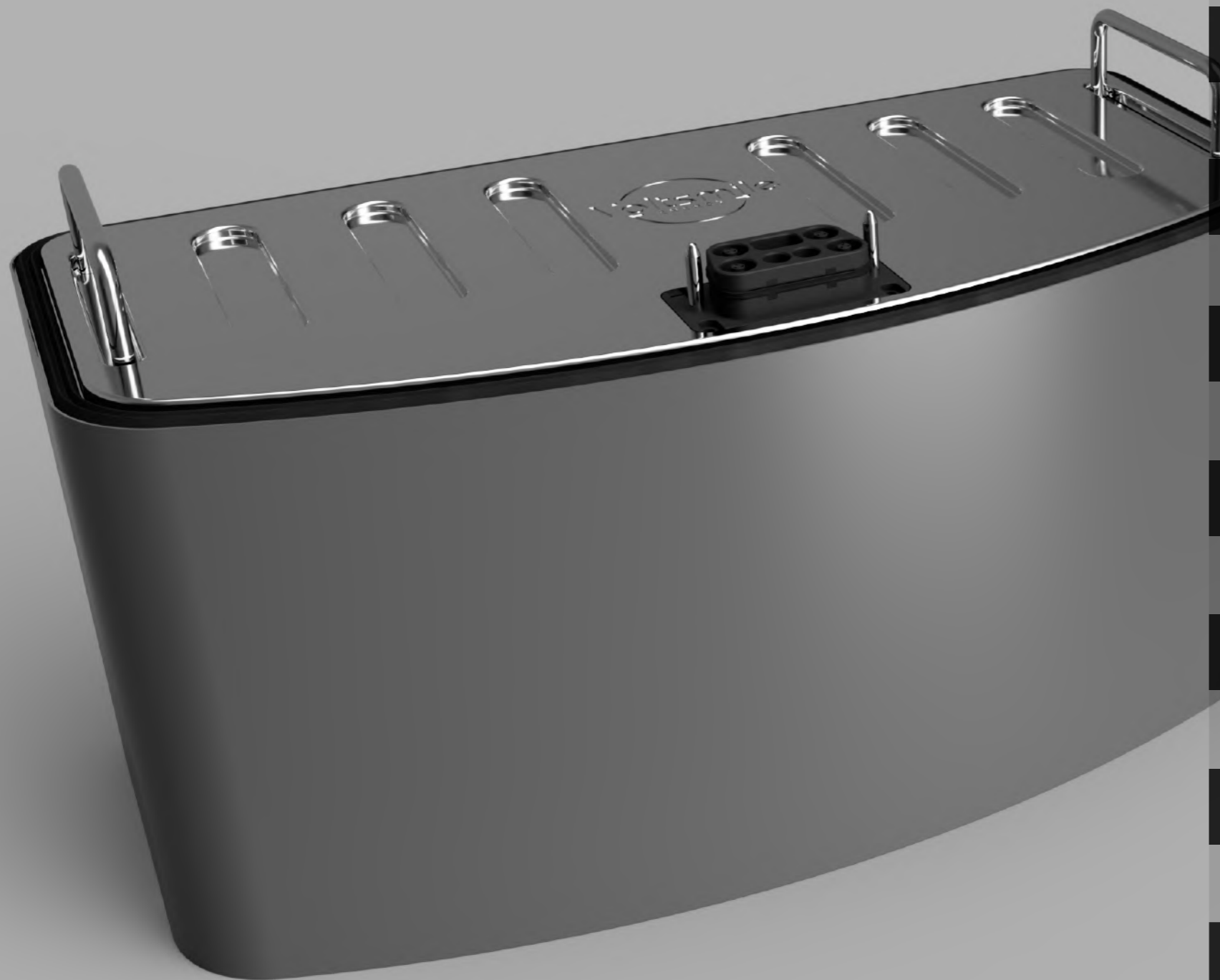
Breaker



Magnetically Detachable Hatch



# H1 Battery Module



Voltage:	51.2V
Capacity:	5,120Wh
Charge Current:	80Amp
Discharge Current:	100Amp
Communications:	CAN / RS485 / Wireless
String Quantity:	12 pcs
Dimensions(mm):	520 × 255 × 280
Weight:	44 kg
Working Temp:	-20°C~50°C*
Store Temp:	-30°C~55°C
IP Rating:	<b>IP65</b>
Humidity:	5%~95%(RH) No Condensation
Altitude:	< 3500 M
Design Life:	10+ Years
Warranty:	10 Years
Certifications:	IEC62619 / IEC62477/ UN38.3 / CE / UKCA/ ROHS

\*Only PLUS(+) models are rated for -20°C charging and discharging. For more informations please refer to COLD CLIMATE page.

	2 Battery Modules	3 Battery Modules	4 Battery Modules	5 Battery Modules	6 Battery Modules	7 Battery Modules
Total Height	885 mm	1,125 mm	1,365 mm	1,605 mm	1,125 mm	1,231 mm
Total Weight	115 Kg	160 Kg	205 Kg	270 Kg	315 Kg	360 Kg
Rated Voltage	102V	154V	205V	256V	307V	358V
Total Capacity	<b>10,240Wh</b>	<b>15,360Wh</b>	<b>20,480Wh</b>	<b>25,600Wh</b>	<b>30,720Wh</b>	<b>35,840Wh</b>
Max Voltage	117V	175V	234V	292V	350V	409V
Min Voltage	87V	130V	173V	216V	259V	302V
Output Wattage	<b>10.2kW</b>	<b>15.4kW</b>	<b>20.5kW</b>	<b>25.6kW</b>	<b>30.7kW</b>	<b>35.8kW</b>



	8 Battery Modules	9 Battery Modules	10 Battery Modules	11 Battery Modules	12 Battery Modules
Total Height	1,365 mm	1,471 mm	1,605 mm	1,231 mm	1,365 mm
Total Weight	405 Kg	450 Kg	495 Kg	565 Kg	605 Kg
Rated Voltage	410V	461V	512V	563V	615V
Total Capacity	<b>40,960Wh</b>	<b>46,080Wh</b>	<b>51,200Wh</b>	<b>56,320Wh</b>	<b>61,440Wh</b>
Max Voltage	467V	526V	584V	642V	701V
Min Voltage	346V	389V	432V	475V	518V
Output Wattage	40.9kW	46.1kW	51.2kW	56.3kW	61.4kW





The M Inverter



**M** Three Phase Inverter

**COMING SOON**

The Perfect pair for the H series

**8kWh**

**10kWh**

**12kWh**

**15kWh**

**OPTION**

**COLD CLIMATE**

**IP65**



# Built-In Heating Elements



 **COLD CLIMATE**

**COLD CLIMATE**  
**Specialist** 

COPYRIGHT VOLTSMILE 2023



# OPTION

FULL SPECTRUM COLOR OPTIONS



OEM & ODM  
Options Available





# TALK TO US

[www.voltsmile.com](http://www.voltsmile.com)  
[Info@voltsmile.com](mailto:Info@voltsmile.com)  
[sales@voltsmile.com](mailto:sales@voltsmile.com)



